

AMDEC PROPERTY DEVELOPMENT

Co-ordinated by: Charlene Conlin - 021 488 4239
Retail Advertising, Independent Newspapers, Cape

Award-winning lifestyle apartments offer incredible value

Amdec spokesperson

AMDEC Property Development is launching Phase 2 of award-winning Evergreen Mulzenberg this month, bringing the enviable retirement lifestyle that many modern seniors now aspire to – and which the development's current residents already enjoy – within reach of more people.

"At Evergreen Mulzenberg, the flagship project for Amdec's national Evergreen retirement village brand, one of the aims is to meet the needs of active seniors who wish to 'upscale' their lives while downsizing from bigger homes, and to be free from the hassles of home maintenance and other chores," says Amdec sales consultant Jayne Hendry.

Situated a short stroll away from Mulzenberg beach, Evergreen has already won a major international award for its location (close to many amenities), facilities and lifestyle in the Best Retirement Development category of CNBC Arabia's 2009 Europe and Africa Property Awards, as well as a national gold award from the Timber Frame Builders' Association for the

striking boardwalk in its 2.7 hectares of landscaped grounds.

Extensive facilities

Phase 2 will comprise a three-storey building that will house 140 contemporary, lock-up-and-go apartments, a frail-care wing and a lifestyle centre that will include a heated indoor swimming pool, a gym with the latest exercise equipment, a games room, a library and a hair salon, as well as a restaurant, coffee bar, bar and a spacious lounge. Secure basement-level parking, brail facilities and a laundromat will also be provided.

Hendry explains that although Evergreen Mulzenberg already has a fully operational clinic and frail care centre, these will be moved to larger premises on the first floor of the new 14 000m² building, where provision will also be made for further expansion as dictated by future demand.

"With a choice of three different managed care levy packages available to residents, based on escalating levels of care as the need arises, buyers will have the peace of mind of knowing that their healthcare needs will be taken care of from the moment they move in," she says.

"These packages range from a basic care

service – which includes the use of all facilities in the lifestyle centre, 24-hour emergency call response, and full security within the development, among other features – to around-the-clock nursing."

Clever design

The well-priced apartments, which are being sold off-plan, offer a choice of studio, or one- or

two-bedroomed units. The studio apartments, which are priced from just R599 000, have been modelled on a top international hotel accommodation design. The bedrooms and open-plan kitchens/living rooms in all the units have been cleverly designed to maximise space, natural light, ventilation and the stunning views of the mountains, sea or central courtyard areas, she says. Built-in cupboards will be provided in all the bedrooms and kitchens, and the latter will

have quality modern finishes, such as granite counter tops, stainless steel ovens, hobs and extractor fans.

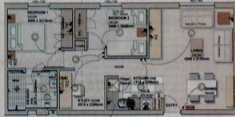
Show flats

Amdec has constructed and fully furnished two show flats, which are now open for viewing, in the grounds of Evergreen Mulzenberg. "These one- and two-bedroomed apartments

show that stylish living can be achieved at an affordable price," says Hendry.

A few of the two- and three-bedroomed houses completed in Phase 1 are also still available, with prices starting at R1 350 000.

For more information on Evergreen Mulzenberg, call Jayne Hendry on 083 324 0323 or Nino Boehm on 082 320 2101. Alternatively, call Amdec's Steenberg office on 021 702 3200 or visit www.evergreenlifestyle.co.za



MAXIMISING SPACE: Evergreen's studio and one- and two-bedroomed apartments are designed to make the best use of light, air flow and views of the mountains and sea.

The studio apartments have been modelled on a top international hotel accommodation design